

POLY
by
bürotime

technical document



POLY



b-design team

Poly is a multi-purpose product family that can be easily used in meeting, waiting and similar areas as well as in home-offices, cafes and restaurants with its organic form and simple line in new generation offices, where concepts such as dynamism, movement and speed are the basis. Thanks to its minimal lines and ergonomic design, it occupies an ideal space in narrow spaces and also offers a comfortable sitting experience. With its different feet forms, colors and materials, it meets the needs of the user and the different concepts of the spaces.

Poly multi-purpose armchair family, with its space-saving minimal design, soft texture and curved structure which surrounds the user ; it easily finds a place for itself in all areas of the office, homes, restaurants and hotels. With its different material and color alternatives, Poly adds a lively and warm atmosphere to its environment. It creates enjoyable spaces that encourage socialization by differentiating traditional waiting areas.



Product family _____










meeting/task chair

guest chair



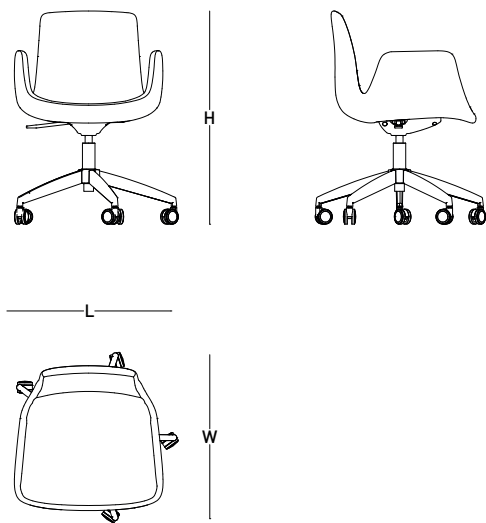
waiting chair

	BASE	STOCK CODE	FEDORA	A.LEATHER	FELT	SYNERGY
	CHROMED BASE	PLY-CHR-F-FX-CR	✓	✓		
		PLY-CHR-K-FX-CR			✓	✓
		PLY-CHR-S-FX-CR				
	METAL PAINTED BASE	PLY-CHR-F-FX-PN	✓	✓		
		PLY-CHR-K-FX-PN			✓	✓
		PLY-CHR-S-FX-PN				
	PLASTIC BASE	PLY-CHR-F-FX-PP	✓	✓		
		PLY-CHR-K-FX-PP			✓	✓
		PLY-CHR-S-FX-PP				
	ALUMINUM BASE WITH POSITION PROTECTOR	PLY-CMP-F-PS-4P-AL	✓	✓		
		PLY-CMP-F-PS-4P-AL			✓	✓
		PLY-CMP-S-PS-4P-AL				
	CHROMED DISC BASE	PLY-ARM-F-DB-CR	✓	✓		
		PLY-ARM-K-DB-CR			✓	✓
		PLY-ARM-S-DB-CR				
	METAL PAINTED DISC BASE	PLY-ARM-F-DB-PN	✓	✓		
		PLY-ARM-K-DB-PN			✓	✓
		PLY-ARM-S-DB-PN				
	CHROMED SLED BASE	PLY-ARM-F-SB-CR	✓	✓		
		PLY-ARM-K-SB-CR			✓	✓
		PLY-ARM-S-SB-CR				
	METALPAINTED SLED BASE	PLY-ARM-F-SB-PN	✓	✓		
		PLY-ARM-K-SB-PN			✓	✓
		PLY-ARM-S-SB-PN				

Size chart

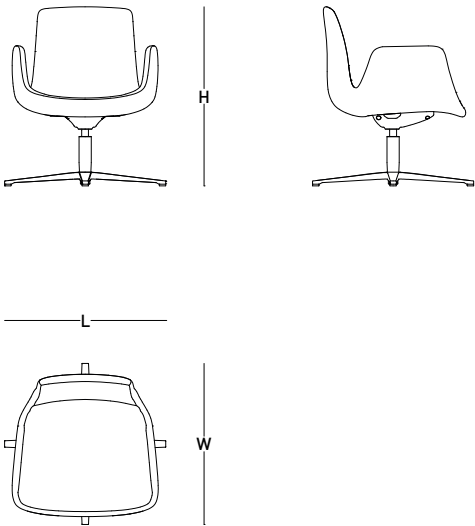
meeting task chair

W:58 L:58 H:83



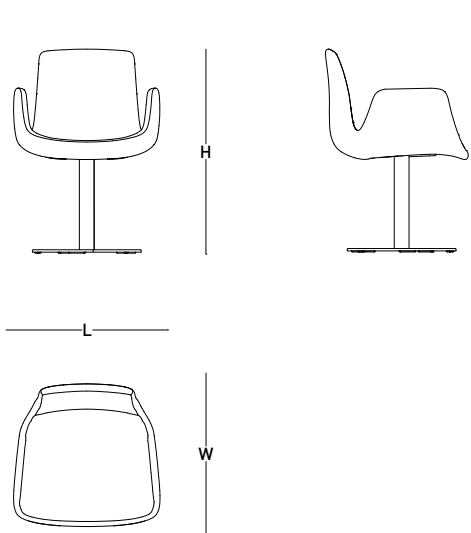
position protector
guest chair

W:58 L:58 H:80



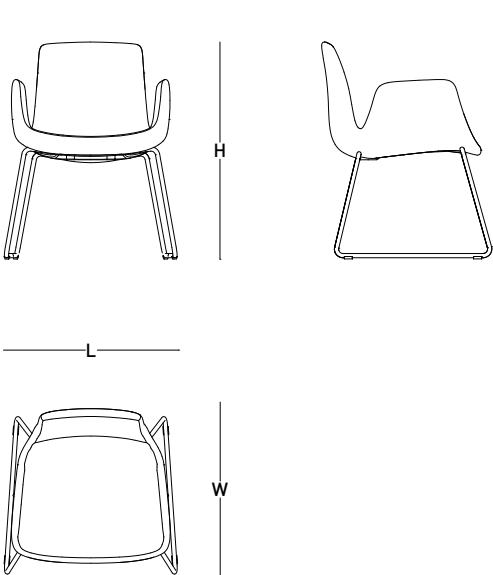
disc base waiting chair

W:58 L:58 H:81



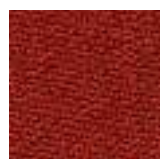
sled base waiting chair

W:62 L:58 H:83



Color options _____

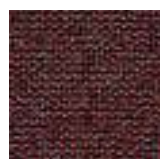
fedora



FDR 101
red



FDR 102
orange



FDR 403
cosmic



FDR 202
amber



FDR 203
purple



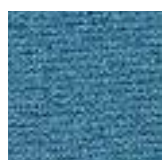
FDR 301
rosa



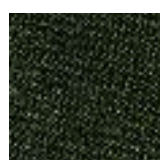
FDR 302
salmon



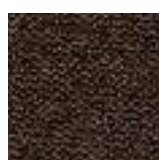
FDR 303
lilac



FDR 104
blue



FDR 205
mass



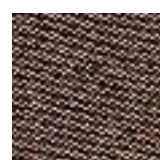
FDR 106
brown



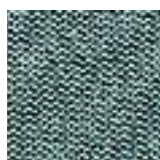
FDR 204
atlantic



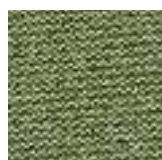
FDR 105
green



FDR 306
mink



FDR 304
river



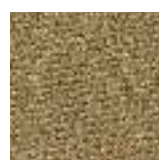
FDR 305
thyme



FDR 107
beige



FDR 310
grey



FDR 108
wheat



FDR 109
yellow



FDR 208
star dust



FDR 210
graphite



FDR 110
black

artificial leather



A 101
white



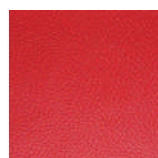
A 201
mustard



A 202
orange



A 105
ginger



A 203
red



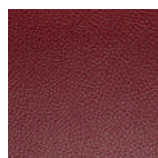
A 104
walnut



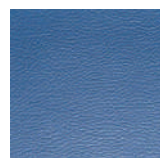
A 102
light cream



A 113
dark beige



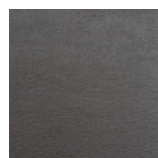
A 204
burgundy



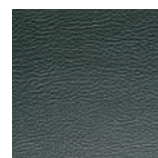
A 205
blue



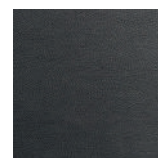
A 114
grey



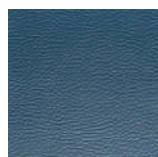
A 110
anthracite



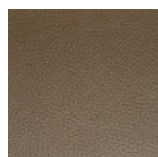
A 208
green



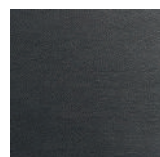
A 111
dark brown



A 206
petrol blue



A 207
khaki



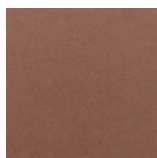
A 112
black

Color options

felt



W 102
coral



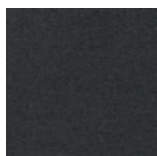
W 202
brown



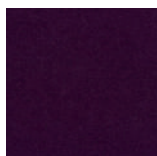
W 203
green



W 104
grey



W 105
anthracite

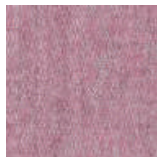


W 207
purple

camira synergy



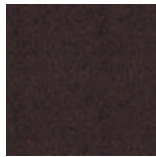
LDS 74
coral



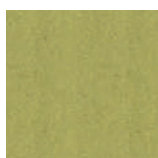
LDS 07
lilac



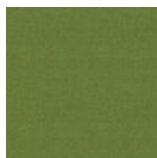
LDS 83
light orange



LDS 39
dark brown



LDS 46
lime green

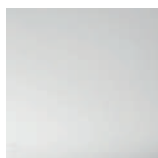


LDS 47
grass green



LDS 48
olive green

metal (base colours)



krom



white



grey



sand



brick



blue



green



anthracite



black